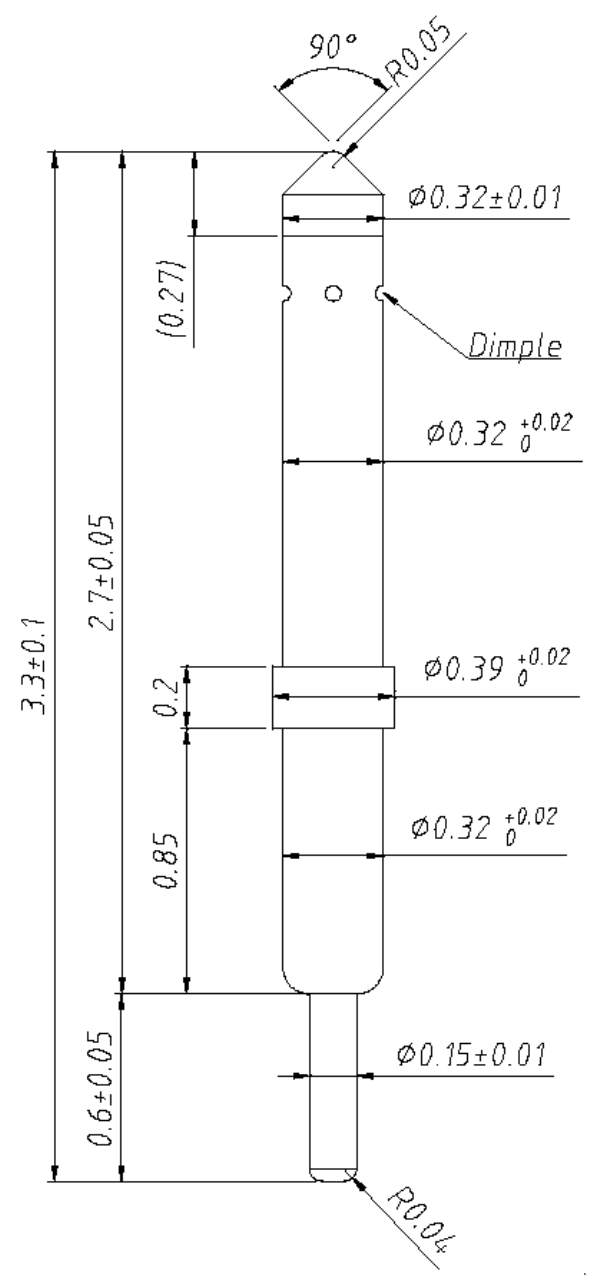


REV	DESCRIPTION	DATE	BY
A	NEW DRAWING	11/18/11	JAG

SKT3717



POINTING ACCURRACY ± 0.05 mm

	PART	MATERIAL	FINISH
PLATED	SPRING	MUSIC WIRE	GOLD PL
PLATED	BARREL	PHOSPHOR BRONZE	GOLD
LD PLATED	TOP PLUNGER	HARDENED BERYLLIUM COPPER	GO
GOLD PLATED	BOTTOM PLUNGER	HARDENED BERYLLIUM COPPER	c

STATE	TRAVEL (mm)	SPRING FORCE (gf)
INITIAL TRAVEL	--	8.3
RECOMMENDED TRAVEL	0.38	24.4
FULL TRAVEL	0.51	28

NOTES:
Spring force +1-%20



DIMENSIONS ARE IN MM UNLESS OTHERWISE SPECIFIED TOLERANCES ARE:

X.X	±0.100MM	ANGULAR:
X.XX	±0.050MM	X.X° ±1.0°
X.XXX	±0.025MM	X.XX° ±0.5°

Unit : Millimeter

ALL DIMENSIONS ARE IN MILLIMETERS UNLESS OTHERWISE SPECIFIED

EMULATION TECHNOLOGY, INC.
— VLSI and SMT ADAPTERS and ACCESSORIES —

759 FLYNN ROAD
CAMARILLO, CA 93012

TEL: (805) 383-8480
FAX: (805) 383-8484

SHEET: 1 OF 1	DATE: 11/18/11	REVISION: A	ASSEMBLY DRAWING
CHECKED:	PREPARED BY: J. GELACIO	ITEM: POGO-PIN-3.33-4	
DO NOT SCALE DRAWING			DESCRIPTION: POGO-PIN-3.33-4