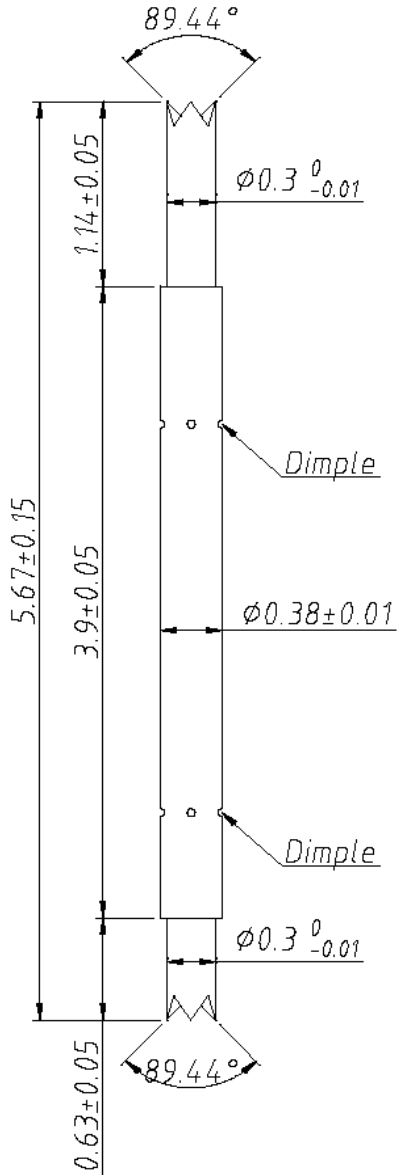


REV	DESCRIPTION	DATE	BY
A	NEW DRAWING	02/17/12	JAG

SKT3747



STATE	TRAVEL (mm)	SPRING FORCE (g)
Initial Travel	--	--
Recommended Travel	0.65	18.0
Full Travel	1.00	--

Spring Force: ± 20%

Pointing Accuracy: ± 0.05 mm

PART	MATERIAL	FINISH
Spring	Music Wire	Gold Plated
Barrel	Phosphor Bronze	Gold Plated
Top Plunger	Hardened Beryllium Copper	Gold Plated
Bottom Plunger	Hardened Beryllium Copper	Gold Plated

DIMENSIONS ARE IN MM UNLESS OTHERWISE SPECIFIED  
 SPECIFIED TOLERANCES ARE:  
 X.X ±0.100MM ANGULAR: X.X° ±1.0°  
 X.XX ±0.050MM X.XX° ±0.5°  
 X.XXX ±0.025MM

ALL DIMENSIONS ARE IN MILLIMETERS UNLESS OTHERWISE SPECIFIED

**EMULATION TECHNOLOGY, INC.**  
 VLSI and SMT ADAPTERS and ACCESSORIES

759 FLYNN ROAD  
 CAMARILLO, CA 93012  
 TEL: (805) 383-8480  
 FAX: (805) 383-8484

SHEET: 1 OF 1 DATE: 02/17/12 REVISION: A

CHECKED: PREPARED BY: J. GELACIO ITEM: ASSEMBLY DRAWING

DESCRIPTION: POGO-PIN-5.67-3

DO NOT SCALE DRAWING