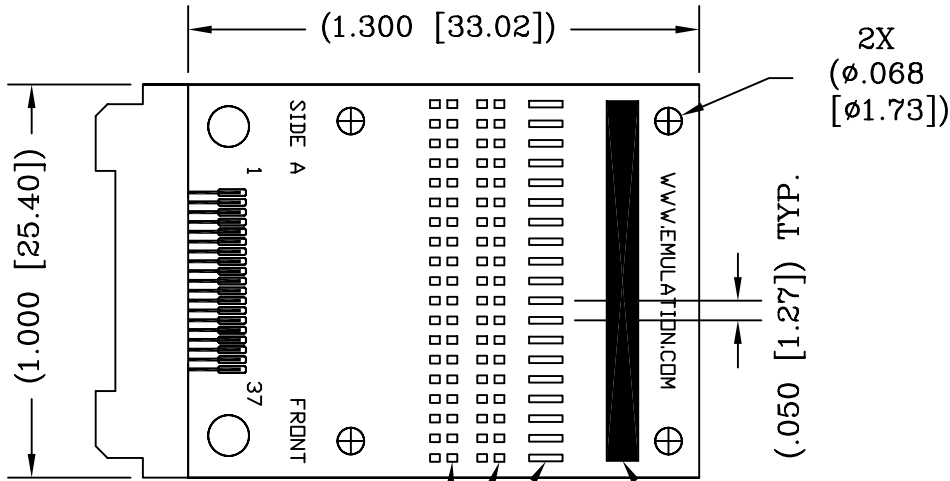


REV	DESCRIPTION	DATE	BY
A	NEW DRAWING	09/11/02	H.N.
B	ADDED SMT NOTES	12/08/03	H.N.
C	ADDED BOM & BOTTOM VIEW	09/09/10	JAG
D	ADDED NOTE 4 AND PAGE 2	04/15/13	JAG

F6690  
DOD 36690

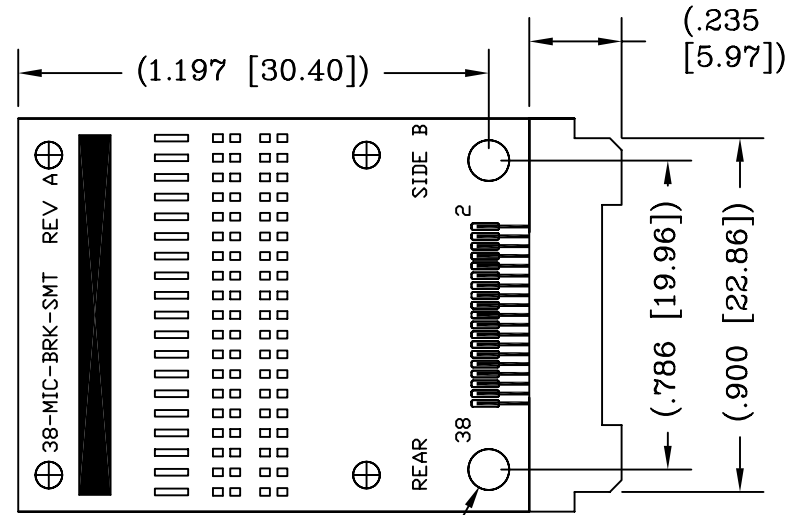
TOP VIEW



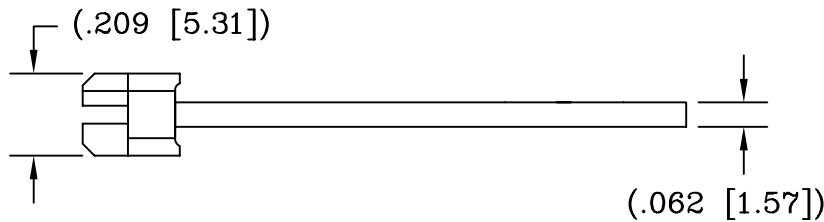
SMT PADS FOR SIGNAL CONNECTIONS OR USER-INSTALLED TERMINATIONS

GROUND STRIP CONNECTED TO INTERNAL GROUND PLANES.

BOTTOM VIEW



2X (0.094 [2.39])



NOTES:

- PINOUT MATCHES AGILENT (HP) STANDARD.
- THIS PART MATES WITH ET ITEM # CONMICFEM38SMT (DRAWING # F1416)
- MATES WITH TYCO PART NUMBERS: 2-767004-2, 767054-1, 767044-1
- ADAPTER BRINGS DIGITAL SIGNALS OUT TO ACCESSIBLE PADS. TERMINATIONS ARE OPTIONAL (NONE BY DEFAULT).

ALL DIMENSIONS ARE IN INCHES [MM] UNLESS OTHERWISE SPECIFIED

**Emulation Technology, Inc.**  
— VLSI and SMT ADAPTERS and ACCESSORIES —  
759 FLYNN ROAD  
CAMARILLO, CA 93012  
TEL: (805) 383-8480  
FAX: (805) 383-8484

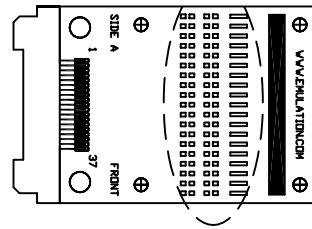
NO.	ITEM	DESCRIPTION	QTY.
1	38-MIC-BRK-SMT	BASE BOARD	1
2	CONMIC38MALEDGE	SOLDER TO EDGE OF #1	1
3	R-00HM-0402-SMT	OPTIONAL 4	A/R

UNLESS OTHERWISE SPECIFIED:  
DIMENSIONS ARE IN INCHES [MM]  
TOLERANCES ARE:  
DECIMALS: .XX ±0.010 .XXX ±0.005 .XXXX ±0.0005  
FRACTIONS: [.X] ±0.25 [XX] ±0.13 [XXX] ±0.013  
ANGLES: ±10°  
FRACTIONS: ±1/64

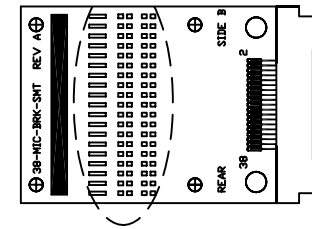
SHEET: 1 OF 1 DATE: 12/08/03 REVISION: D  
CHECKED: Perry Munroe DRAWN: Huy Nguyen  
Scale 2:1 DO NOT SCALE DRAWING  
ASSEMBLY DRAWING  
ITEM: MIC-38-SMTPADS  
DESCRIPTION: MIC-38-SMTPADS

**PIN MAP**  
**(WIRED 1 TO 1)**

SEE DETAIL A



SEE DETAIL B



DETAIL A



- R1A    R1B  PAD1
- R3A    R3B  PAD3
- R5A    R5B  PAD5
- R7A    R7B  PAD7
- R9A    R9B  PAD9
- R11A    R11B  PAD11
- R13A    R13B  PAD13
- R15A    R15B  PAD15
- R17A    R17B  PAD17
- R19A    R19B  PAD19
- R21A    R21B  PAD21
- R23A    R23B  PAD23
- R25A    R25B  PAD25
- R27A    R27B  PAD27
- R29A    R29B  PAD29
- R31A    R31B  PAD31
- R33A    R33B  PAD33
- R35A    R35B  PAD35
- R37A    R37B  PAD37

DETAIL B

- PAD2  R2B   R2A
- PAD4  R4B   R4A
- PAD6  R6B   R6A
- PAD8  R8B   R8A
- PAD10  R10B   R10A
- PAD12  R12B   R12A
- PAD14  R14B   R14A
- PAD16  R16B   R16A
- PAD18  R18B   R18A
- PAD20  R20B   R20A
- PAD22  R22B   R22A
- PAD24  R24B   R24A
- PAD26  R26B   R26A
- PAD28  R28B   R28A
- PAD30  R30B   R30A
- PAD32  R32B   R32A
- PAD34  R34B   R34A
- PAD36  R36B   R36A
- PAD38  R38B   R38A

SMT NOTES:

The Mictor pads are .017" x .070".  
 The 0402 pads are .028" x .030"  
 The connector pads to the right of the 0402's are .017" x .085".  
 The copper plane is .080" x .915".

ALL DIMENSIONS ARE IN INCHES [MM] UNLESS OTHERWISE SPECIFIED			
		<b>Emulation Technology, Inc.</b> — VLSI and SMT ADAPTERS and ACCESSORIES —	
759 FLYNN ROAD		TEL: (805) 383-8480	
CAMARILLO, CA 93012		FAX: (805) 383-8484	
SHEET: 1 OF 1	DATE: 04/15/13	REVISION: D	ASSEMBLY DRAWING
CHECKED:	DRAWN: J. GELACIO		ITEM: MIC-38-SMTPADS
Scale N/A	DO NOT SCALE DRAWING		DESCRIPTION: MIC-38-SMTPADS